

# Washer extractor

## W5600X

### Features and benefits

- **Compass Pro<sup>®</sup> microprocessor offers:**
  - Large display and one control knob for easy program selection
  - Language selection
  - Quick selection and option buttons for the most frequently used wash programs and options
- Extremely low water and energy consumption – see table below
- Four compartment detergent box for manual dosing of powder or liquid detergent
- High extraction force for efficient dewatering
- Door with gasket and strong hinges built for heavy duty operation
- Stainless and galvanized steel in all vital parts for high degree of rust protection
- SuperBalance guarantees the correct extraction force



Images shown are a representation of the product only and variations may occur.

### Main options

- Stainless steel side panels
- Coin-meter
- Five compartment supply injector
- Third water inlet valve

Main specifications				W5600X	
Max. capacity	filling factor 1:10	kg/lb		60/135	
Drum,	volume	litre/ft <sup>3</sup>		600/21.2	
	diameter	ø mm/inch		980 / 38 9/16	
Extraction		rpm		630	
G-factor				220	
Heating alternatives, 230/400V	electricity	kW		38/54	
	steam			x	
	non-heated			x	
<b>Consumption data 6S03/6L33</b>				Full load, 60 kg / 135 lb	Half load, 30 kg / 67.5 lb**
<b>"Warm" *</b>					
Total time		min		31	30.5
Water consumption (cold+hot)		litre/gallon		485/128+45/12	445/117+45/12
Energy consumption (motor/heating/hot water)		kWh		0.45/4.25/2.9	0.45/2.9/3.1
Steam consumption		kg/lbs		10.7/23.6	9.0/19.0
Residual moisture		%		62	68

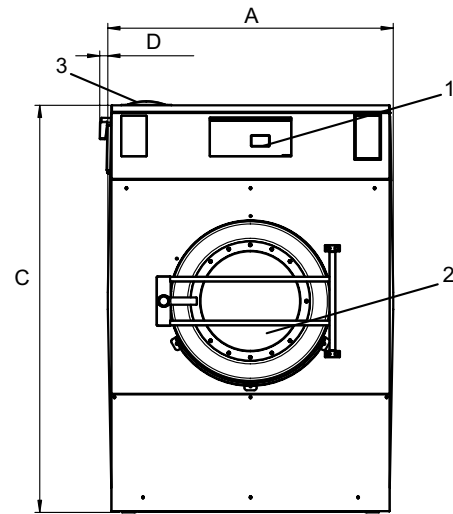
\* Water temperature 59°F cold water and 149°F hot water.  
 \*\* Depending on steam pressure.

Electrical connections					
Heating alternative	Main voltage		Heating power kW	Total power kW	Recommended ITCB A
		Hz			
Electric heated	208-240V 3 -	60	29-38	30-39	125
	440/480V 3 -	60	38/54	40/56	70/100
Steam or Non heated	208-240V 3 -	60	-	2.6	15

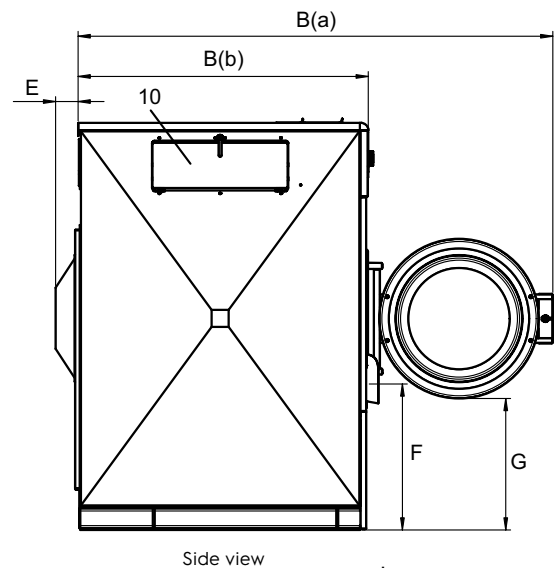
Water and steam connection		W5600X
Water valves	DN/inch	25/1
Water pressure	psi	30-90
Capacity at 300 kPa	l/min	110
Drain valve	ø mm/inch	75/3
Draining capacity	l/min	170
Steam valve	DN/inch	20 / 3/4
Steam pressure	psi	7-40
Floor requirements		
Frequency of the dynamic force	Hz	10.5
Floor load at max extraction	kN	10 ± 15.6
Sound levels		
Sound power/pressure level at extraction*	dB(A)	83/66
Sound power/pressure level at wash*	dB(A)	69/52
Heat emission		
% of installed power, max		5
Shipping data**		
Weight	net, kg/lbs	775 / 1709
Shipping volume	m <sup>3</sup> /ft <sup>3</sup>	3.2 / 34
Dimensions in mm/inch		
A	Width	1173 / 46 3/16
B(a)	Depth	1951 / 76 13/16
B(b)	Depth	1193 / 46 15/16
C	Height	1673 / 65 7/8
D		33 / 1 5/16
E		93 / 3 11/16
F		600 / 23 5/8
G		540 / 21 1/4
H		1370 / 53 15/16
I		125 / 4 15/16
J		255 / 10 1/16
K		227 / 8 15/16
L		87 / 3 7/16
M		85 / 3 3/8
N		802 / 31 9/16
O		103 / 4 1/16
P		1544 / 60 13/16
Q		1361 / 53 9/16
R		587 / 23 1/8
1	Operating panel	6 Drain
2	Door opening ø 535 mm / 21 1/16 inch	7 Liquid detergent supply
3	Detergent box	8 Electrical connection
4	Cold water	9 Steam connection
5	Hot water	10 Detergent supply injector, powder, right or left side (option)

\* Sound power levels measured according to ISO 60704.

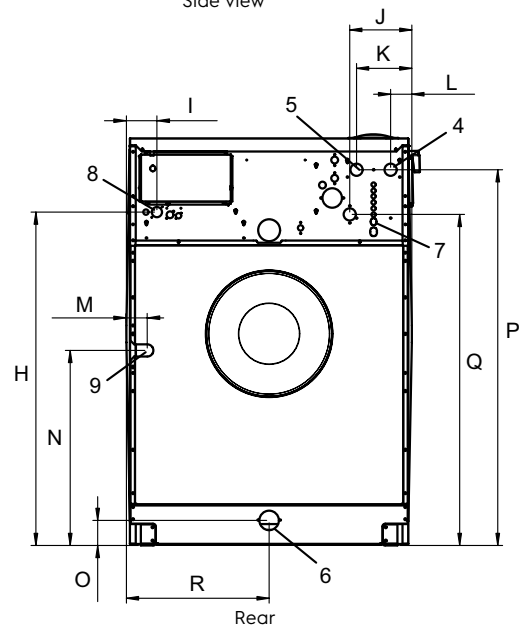
\*\* Average data. Crated weight/shipping volume depends on configuration. Please contact logistics for exact measures.



Front



Side view



Rear